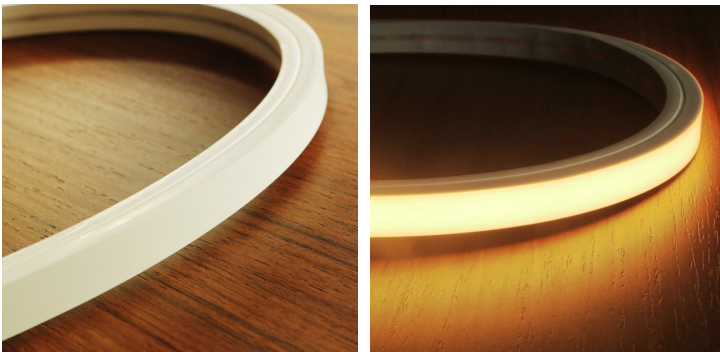


FLEXNEON LLAST15 IP67

TECHNICAL SPECIFICATION



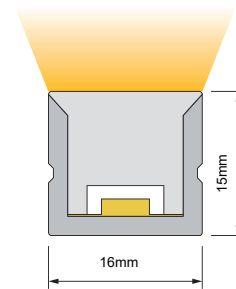
LED Flex DC24V
16mm*15mm (0.63"*0.59") W*H

- IP67 resistant
- IK08 rated
- 2Step MacAdam
- UV resistant
- Chemical resistant
- Solvent resistant
- Saltwater temporary immersion

2Step MacAdam and dot free lighting effect guarantee the most excellent performance for indoor & outdoor applications.

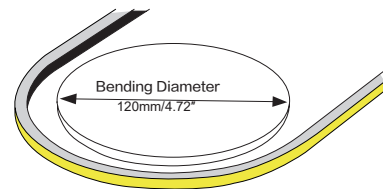
LUMINAIRE STRUCTURE

Material: Full polyurethane coating
Power: 10W/M LED
CCT: 2700K/3000K/3500K/4000K/6500K
Voltage: DC24V (23.5Vmins, 24.5Vmax)
CRI: Ra93



Electrical data

Voltage	DC24V
LED Pin Temperature	Max. 60.9°C / 141.6°F
Storage Temperature	-25°C ~ 13°F _{min} 60°C / 140°F _{max}



LEDline Flex Side	Standard Output
Power (W/m W/ft)	10 (Watt)
Efficacy (lm/W) @ 4000K	58
Max. Ambient temp. (T _{max})	45°C / 113°F

CCT/ Power	2700K	3000K	3500K	4000K	6500K	Max. Run Length	Unit Cut
Power/ Lumen	10W/M	587	607	596	575	580	17M 50mm

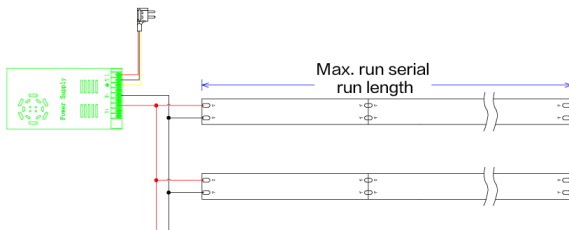
FLEXNEON LLAST15 IP67



ORDER CODE

SERIES NAME	COLOR	LENGTH	POWER	CABLE ENTRY
LLAST15	27 = 2700K	5 = 5Mtrs 10 = 10Mtrs	10 = 10W	F = FRONT
	30 = 3000K			
	35 = 3500K			
	40 = 4000K			
	65 = 6500K			
				S = SIDE B = BOTTOM

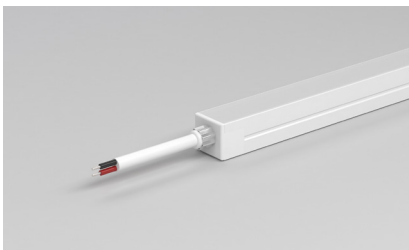
WIRING DIAGRAM



-Please contact us if >150W power supply is needed.

-Please contact us if you need dimmable function.

VARIOUS CONNECTIONS



Front Cable Entry
The cable could be hidden in all directions by the flexible design.
DIY connector optional



Side Cable Entry
The cable could be perfectly hidden to achieve seamless light connection.
DIY connector optional



Bottom Cable Entry
The cable could be perfectly hidden to achieve seamless light connection.
DIY connector optional

- ▶ Facade lighting, contour lighting and landscape lighting.
- ▶ Solutions for retail shops.
- ▶ Signage and illuminated advertising.
- ▶ Ideal for architectural lighting, coves, object integration.

ADDITIONAL INFORMATION

- ▶ Please light it up for a quick check before installation.
- ▶ Bending diameter is 120mm, do not bend to upward or downward direction or bend too sharp or twist. If bend it wrongly, PCB inside will be damaged and the lighting fixture will not turn on.
- ▶ During installation, please make sure there are at least two workers to cooperate together and strictly follow the instruction manuals.
- ▶ Warranty: All LED light are warranted to be free from defects in Product itself for 5 years from the date of purchase. This warranty does not cover failures due to abuse, misuse, improper handling, act of nature, negligence, normal wear, accidental damage, modifications or repairs made by the purchaser or incorrect voltage conditions.

